

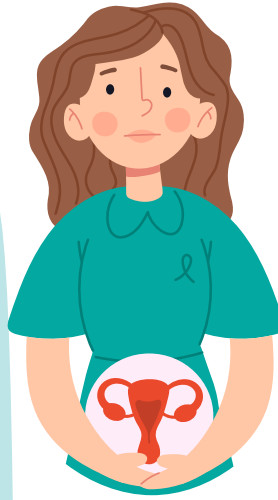
Cervical Cancer

4th most common cancer globally



Symptoms

- Abnormal bleeding, between, heavier or longer periods
- Watery vaginal discharge
- Post-menopausal vaginal bleeding
- Pelvic pain or pain during intercourse.



Who is at Risk



- Women with HIV
- Early sexual activity or multiple partners
- Long-term birth control use
- Having 3+ full-term pregnancies
- Weakened immunity

Preventive Measures

- Get HPV vaccine
- Limit sexual partners
- Regular check-ups & Pap Smear